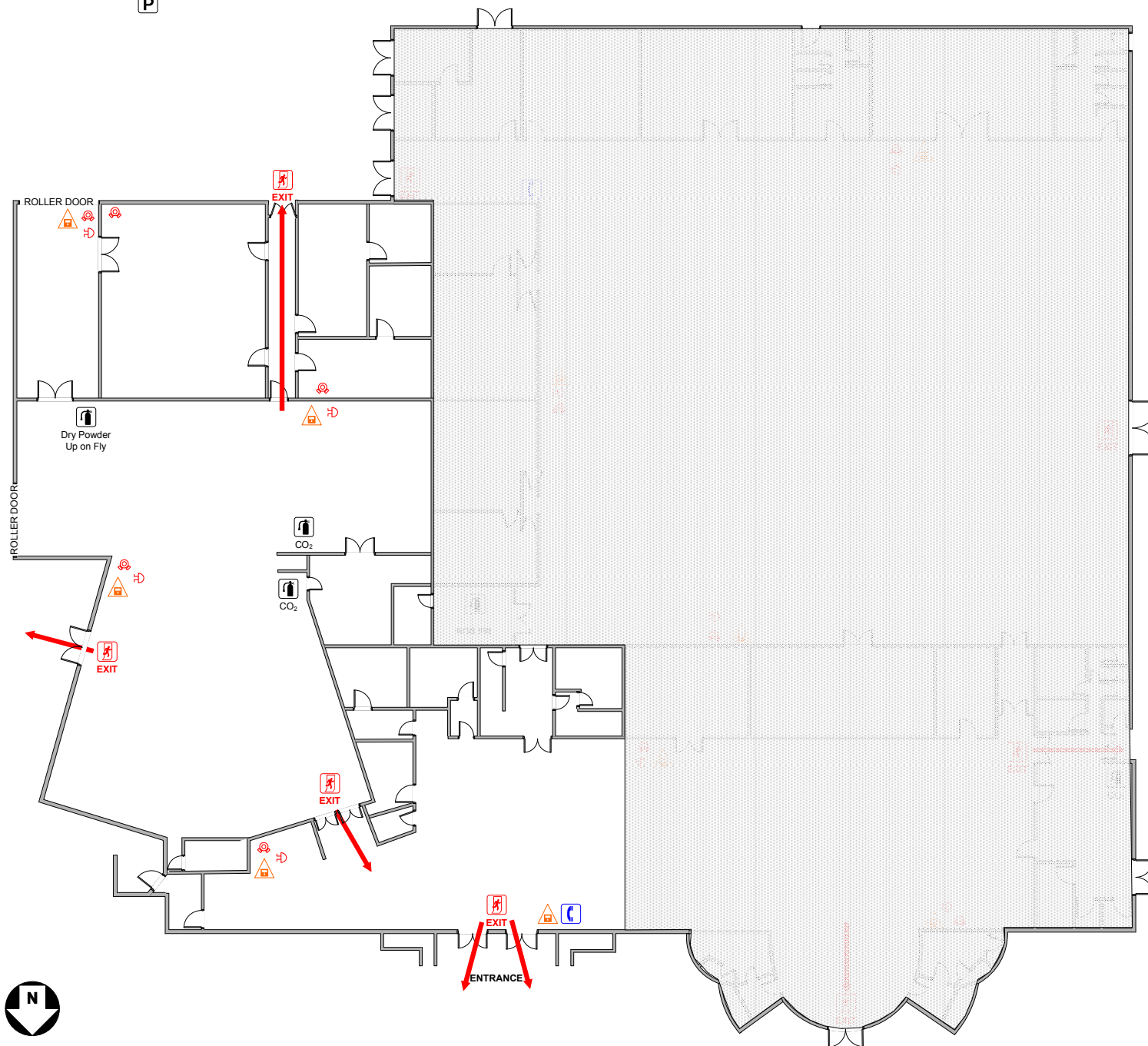


CARPARK











SHORT STREET

WHAKATANE WAR MEMORIAL HALL

EMERGENCY EXITS & EQUIPMENT

THEATRE HIRE PLAN

LEGEND

-  Manually operated fire alarm control panel
-  Fire Siren Speaker
-  Fire Hose Reel
-  Fire Extinguisher (Carbon Dioxide)
-  Fire Extinguisher (Dry Powder)
-  Telephone
-  Emergency Exit Door
-  Emergency Exit Direction

Plan Details

Date Created: 01/10/2009

Author: Mark Cleghorn

Author Position: Asset Officer

Organisation: Whakatane District Council

Scale: NOT TO SCALE

For indicative purposes only.
Not to be used to infer
empirical measurements.

Revision History:

Date Revised:

Revised By:

Position:

Organisation: